



Hari's Chalets no. 4 „Piccolo“

Überreicht durch:

CONTACT groups.ch
Ferienhäuser und Hotels für Gruppen
Postfach, CH-4410 Liestal
Tel. +41-(0)61 926 60 00
Fax +41-(0)61 911 88 88
www.groups.ch



Location and surroundings

The chalet dates from 1721. It was extended in 2001 and the new section is wheelchair accessible on two floors. The chalet stands at the entrance to Bonderlental, one of Adelboden's tiny side valleys. This section is ideal for small groups, including guests in wheelchairs and families who would like a little more comfort and space. This part of the chalet can comfortably accommodate six guests in wheelchairs.

This section of the chalet is completely self-contained and separate from the neighbouring section. The two sections can be linked with a connecting door if required.

Next to the chalet is a large playing field with a barbecue area, table tennis table and plenty of space for fun and games or simply relaxing. 8-10 cars can be parked around the chalet.

Beds: to sleep a total of 19 persons

Room layout: 5 rooms to sleep 3 each (1 bunk bed, 1 single bed)
 1 room to sleep 4 (1 bunk bed, 2 single beds)

Each bed has a pillow and Nordic duvet (bedlinen can be brought or hired). Each room has a washbasin with hot & cold water, wardrobe and shelf space. The bunk beds on the upper floor will be replaced by single beds for guests in wheelchairs (then total of 17 beds). ♿ These rooms and areas have wheelchair access.

The equipment and storage room behind the building is equipped with a washing machine and tumble drier.

Guests in wheelchairs can reach the upper ground floor by escalator!

Room layout (plan on back):

Ground floor:

1 entrance ♿
1 washroom with shower, washbasin and WC ♿
1 separate WC
1 communal lounge ♿ for 20 persons with TV and Video VHS, 📺

Upper floor

2 rooms to sleep 3 each (1 bunk bed, 1 single bed)
1 room to sleep 4 (1 bunk bed, 2 single beds)
1 washroom with shower, washbasin and WC

Upper ground floor

3 rooms to sleep ♿ 3 each (1 bunk bed, 1 single bed)
1 washroom with shower, washbasin and WC ♿

Kitchen equipment

1 electric cooker with 5 hotplates and 2 oven
1 sink with double basin
1 fridge with 200 litres
1 deep-freezer 60 litres
Mixer, bread-slicer, coffee machine, kettle, microwave
Cutlery for 24 persons
Ample pots and pans
Dishwasher

Additional facilities and services

-Telephone in chalet (Internet connection possible)
-Games chest
-Slide projector, video, DVD, TV, flip chart and overhead projector available for hire
-Table-tennis table (outside)
-Summer adventure weeks
-Meals delivery service
-Luggage transport, ski bus as arranged
-Bad weather options

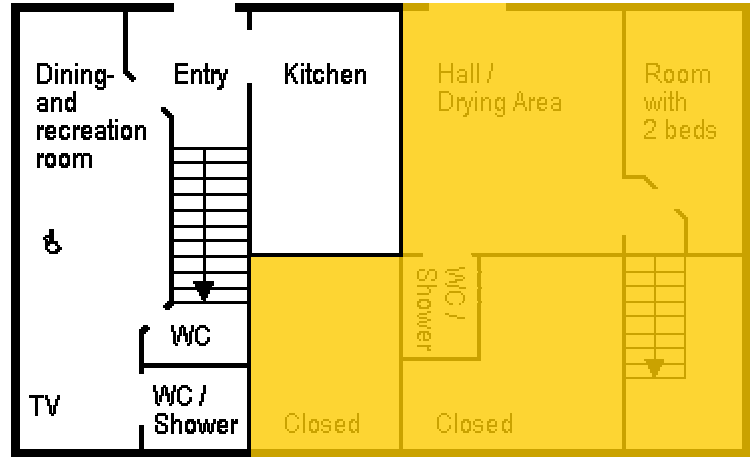
Hari's Chalets no. 4 „Piccolo“ (small chalet part)

Belongs to part of chalet described

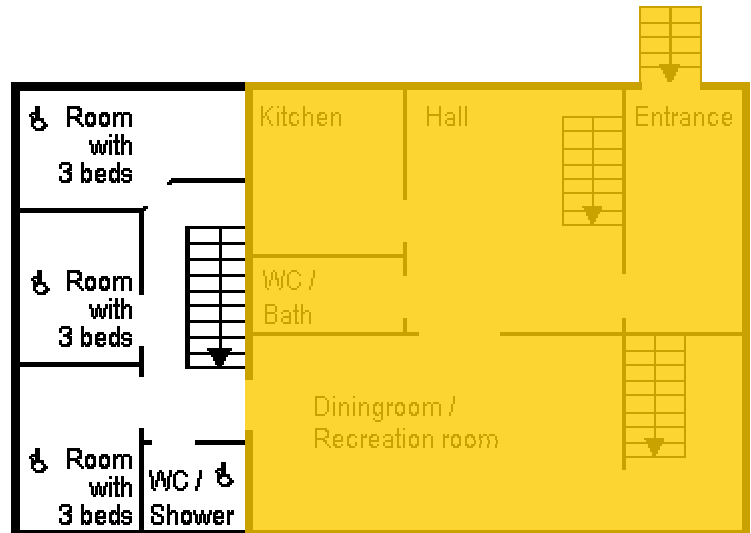
Does not belong to part of chalet described

These rooms and areas have wheelchair access

Ground floor



Upper ground floor



Upper floor

