



Hari's Chalets no. 3

Überreicht durch:

CONTACT groups.ch
Ferienhäuser und Hotels für Gruppen
Postfach, CH-4410 Liestal
Tel. +41-(0)61 926 60 00
Fax +41-(0)61 911 88 88
www.groups.ch



Location and surroundings

This chalet was built as group accommodation on a gentle slope in Bonderlen, one of Adelboden's tiny side valleys. The chalet is very roomy and comfortable. Group leaders particularly appreciate the separate group-leader rooms with shower & WC. As well as oozing with character, the chalet offers excellent, fully-furnished accommodation with modern sanitary facilities, a central heating system supplying plenty of hot water and warmth and of course a games and drying room. Next to the chalet is a level forecourt, ideal for setting up a party table or table tennis. There is parking space for 8-10 cars around the chalet and a large playing field nearby.

In winter you have the use of our private ski lift right next to the house - super for skiing and sledging fun.

Beds: to sleep a total of 27 persons

Room layout:

- 1 room to sleep 2 (single beds)
- 1 room to sleep 3 (single beds)
- 2 room to sleep 6 each (bunk beds)
- 1 room to sleep 10 (bunk beds)

All beds have a pillow and quilt. (Please bring your own sleeping bag or bedlinen)

Room layout (plan on back):

Ground floor:

- 1 games and drying room with outside entrance
- Table-tennis table and table football
- 1 x 200-litre fridge and 1 x 40-litre deep-freezer
- Shoe and equipment shelves
- 1 shower

Upper ground floor

- Hall and entrance
- Kitchen
- 1 WC
- 1 bathroom with 1 shower cubicle and washbasin
- 1 communal lounge for 30 persons

Kitchen equipment

- 1 electric cooker with 5 hotplates and 2 oven
- 1 sink with double basin
- 2 fridges 200 litres
- 2 deep-freezers, 25 & 40 litres
- Mixer, bread-slicer, coffee machine, kettle
- Cutlery for 40 persons
- Ample pots and pans

Upper floor

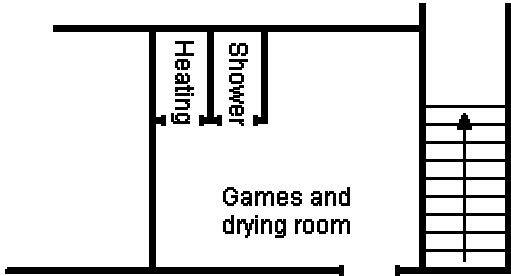
- 1 room with 3 single beds (group-leader area)
- 1 room with 2 single beds (group-leader area)
- 1 shower and washbasin (group-leader area)
- 1 separate WC (group leader area)
- 1 lounge with ☎, washbasin and separate entrance via steps and balcony (in group leader area)
- 1 room to sleep 6 (1 bunk bed, 2 double beds)
- 1 bathroom with 1 shower cubicle, WC and washbasin
- 1 room to sleep 10 (bunk beds)
- 1 room to sleep 6 (bunk beds)

Additional facilities and services

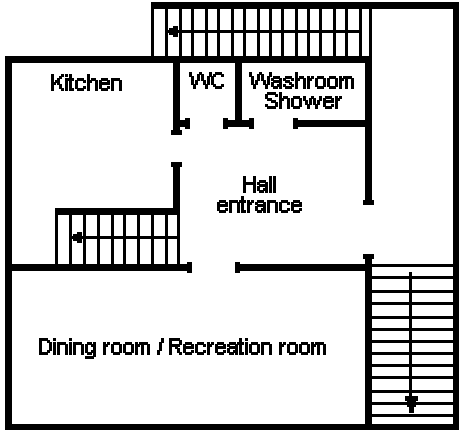
- Telephone in chalet (Internet connection possible)
- Games chest
- Slide projector, video, DVD, TV, flip chart and overhead projector available for hire
- Table-tennis table and table football
- Project folders for schools
- Summer adventure weeks
- Meals delivery service
- Luggage transport, ski bus as arranged
- Bad weather options

Hari's Chalets no. 3

Ground floor



Upper ground floor



Upper floor

